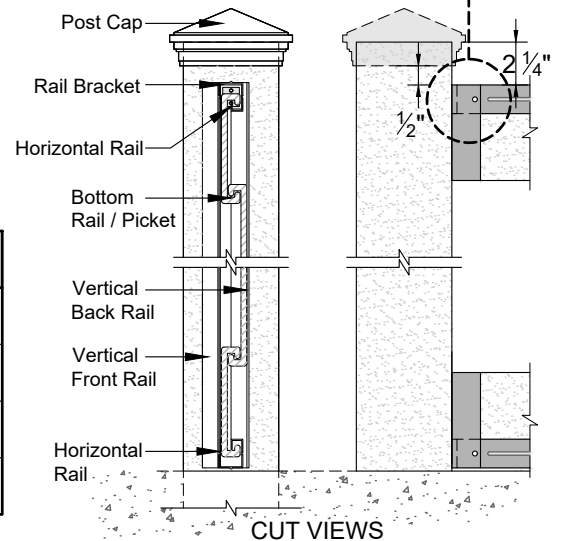


NOTES:

- ALL HORIZONS COMPONENTS ARE MATTE BLACK POWDER COATED GALVANIZED STEEL (COASTAL APPLICATIONS MUST USE STAINLESS STEEL).
- INSTALLATION TO BE COMPLETED PER MANUFACTURER'S SPECIFICATION.
- REFER TO YourNextFence.com FOR CONSTRUCTION DETAILS AND PRODUCT INFORMATION.
- DRAWING NOT TO SCALE.



COMPONENT	QTY.	LENGTH	COMPONENT	QTY.	LENGTH
Post Cap 	1	N/A	Vertical Back Rail *(2-26") 3/4"x1 1/2" (Horizons)	1	73 1/2"
Post 5" x 5"	.5	108"	Vertical Front Rail *(2-26") 5/8"x1 1/2" (Horizons)	1	73 1/2"
Horizontal Rail 1 1/2" x 1 1/4" (Horizons)	2	92"	Horizontal Top Rail Bracket 1 1/4"x1" (Horizons)	2	1"
Bottom Rail / Picket 1" x 5 3/4"	5	91"	Pan-Head Screws #10	50	3/4"

Component lengths may vary

*Cut 2 pieces, 1 from each end.

091919